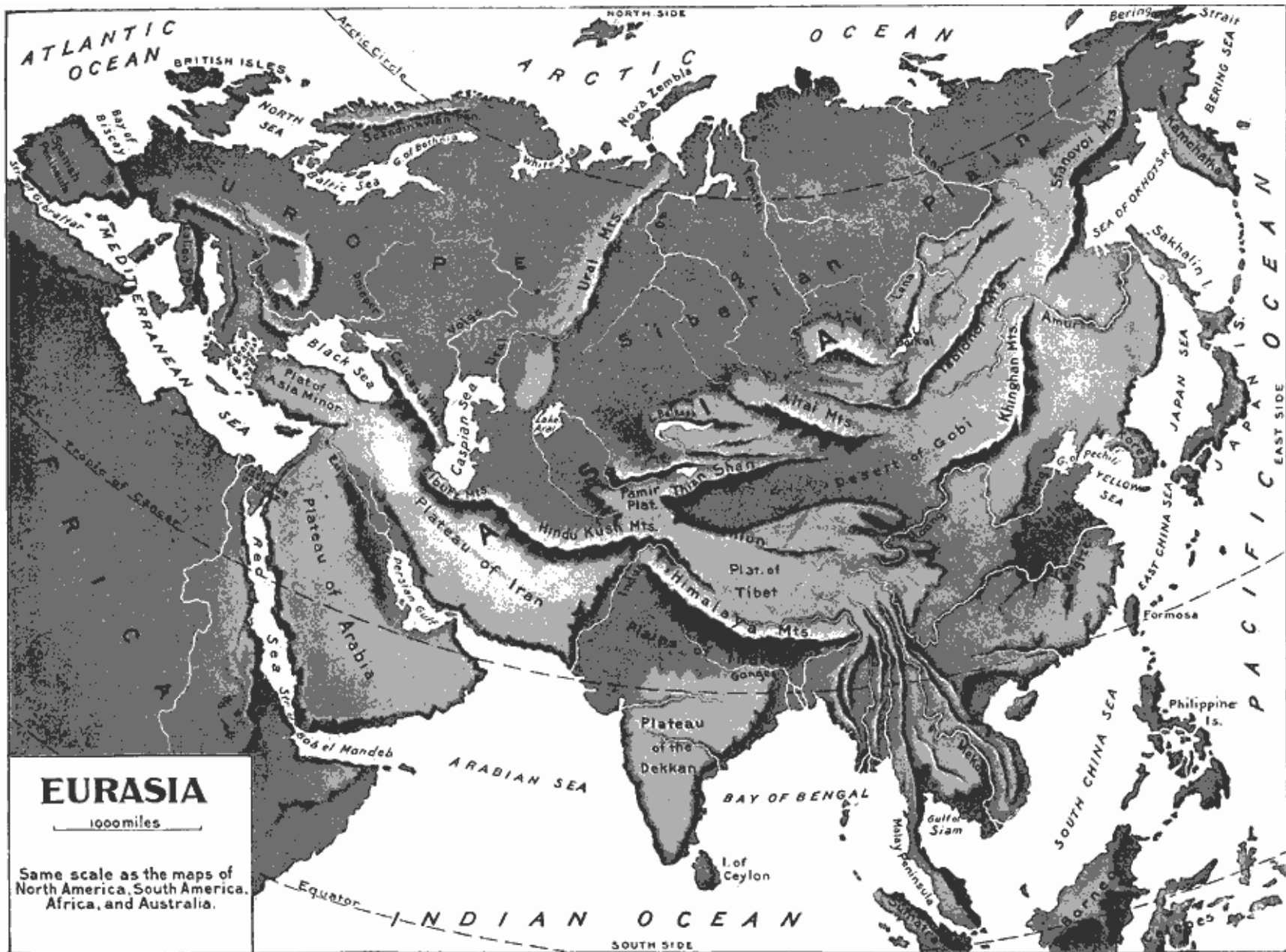
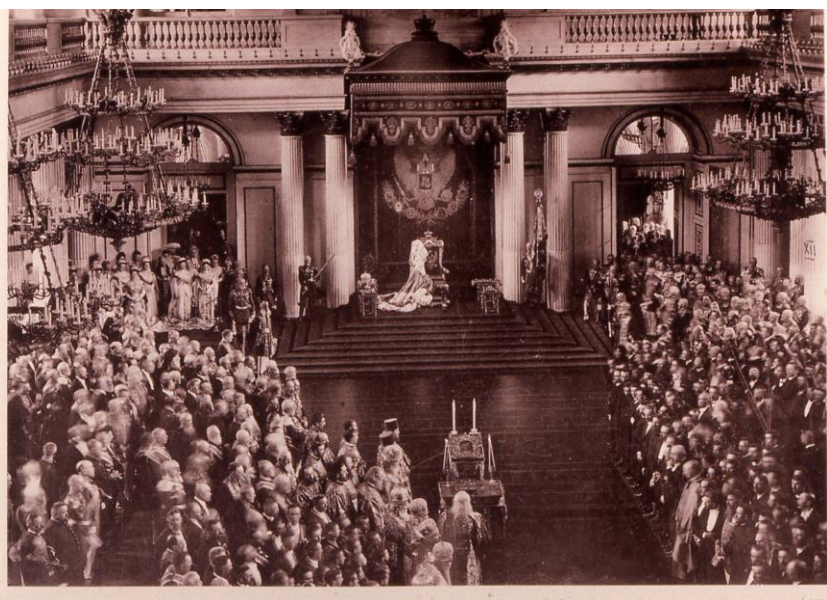


# Eurasia: A Geopolitical Space



# The Late Imperial Era, 1861-1914



“Varsovienne,” 1897

Opening of First State Duma,  
April 1906  
Winter Palace, St. Petersburg



Peter Ilyich Tchaikovsky  
“The Slavonic March,” 1880



Igor Stravinsky  
“The Rite of  
Spring,” 1912-13

# Comparative Population, 1861 and 1913

Population of Russian Empire

1863 61.1 million

1885 81.7 million

1897 126 million

1913 180 million

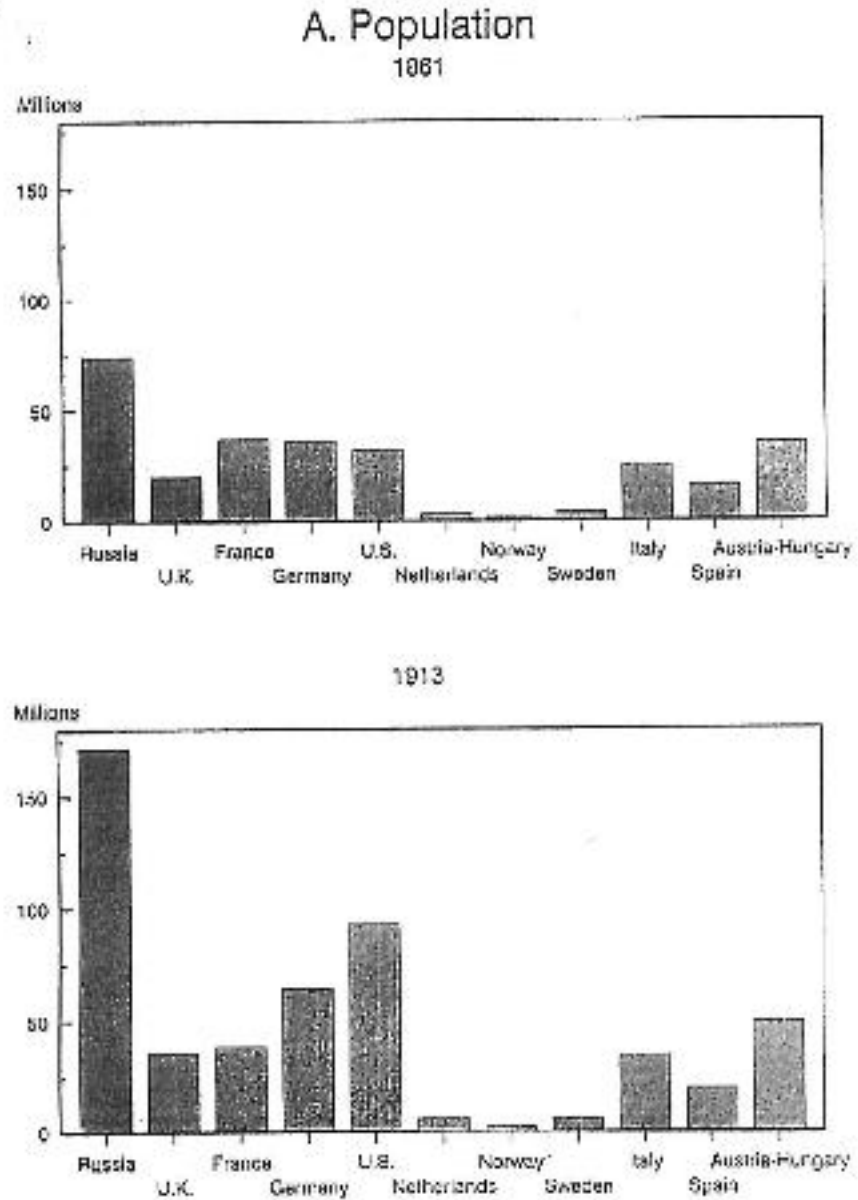


Figure 2.1: Selected economic and social indicators, Russia and other countries, 1861 and 1913



# Industrial and Commercial Expansion, 1880-1914

## A. Self-Sustaining Commercial and Industrial Expansion

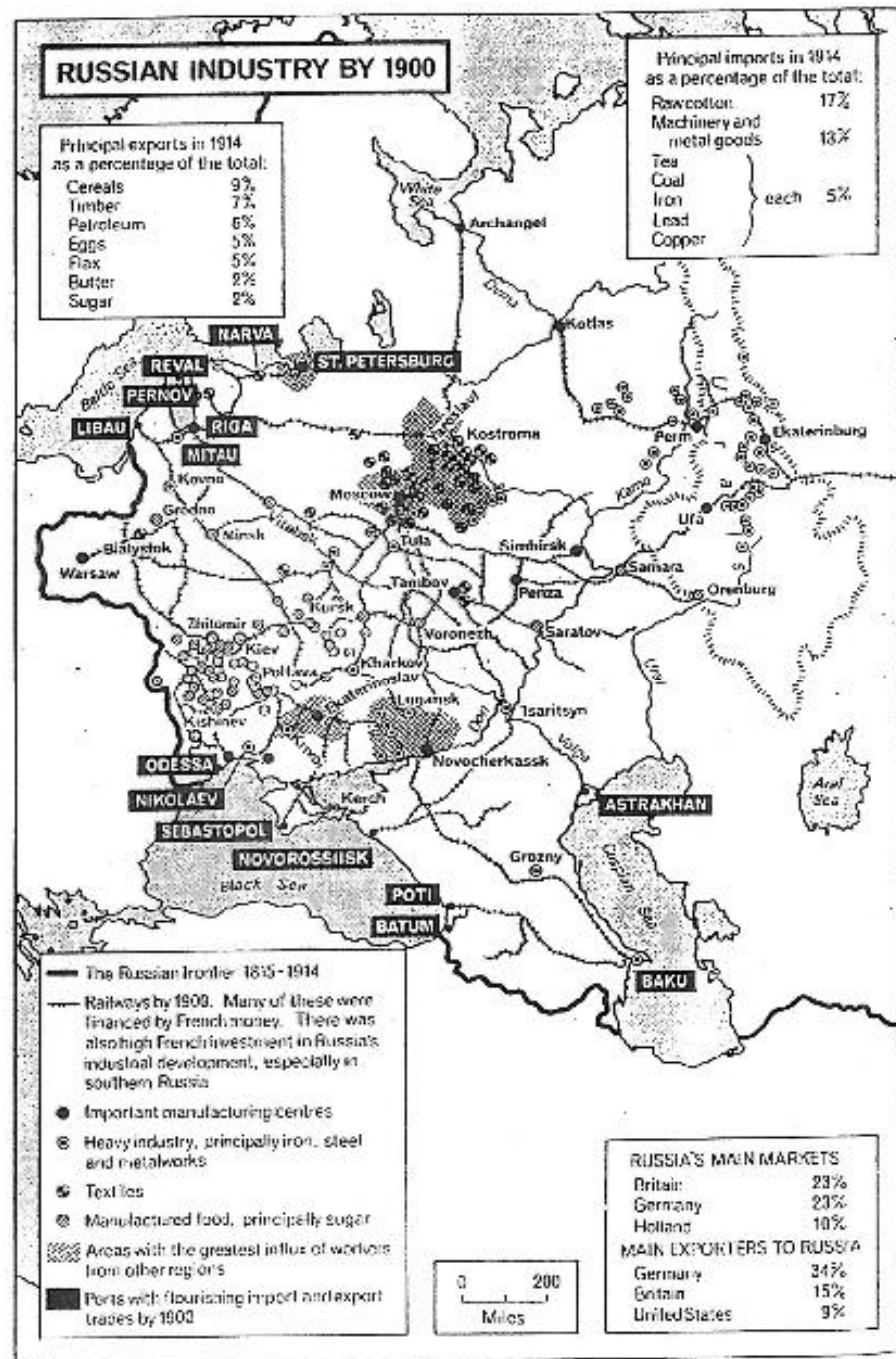
Indices of Industrial Production (1913=100)

	UK	Russia	France	Germany
1861	31.7	8.5	38.7	13
1881	53.5	22	54.1	27
1901	80.3	65	67.7	59
1912	93.9	95	102.3	91

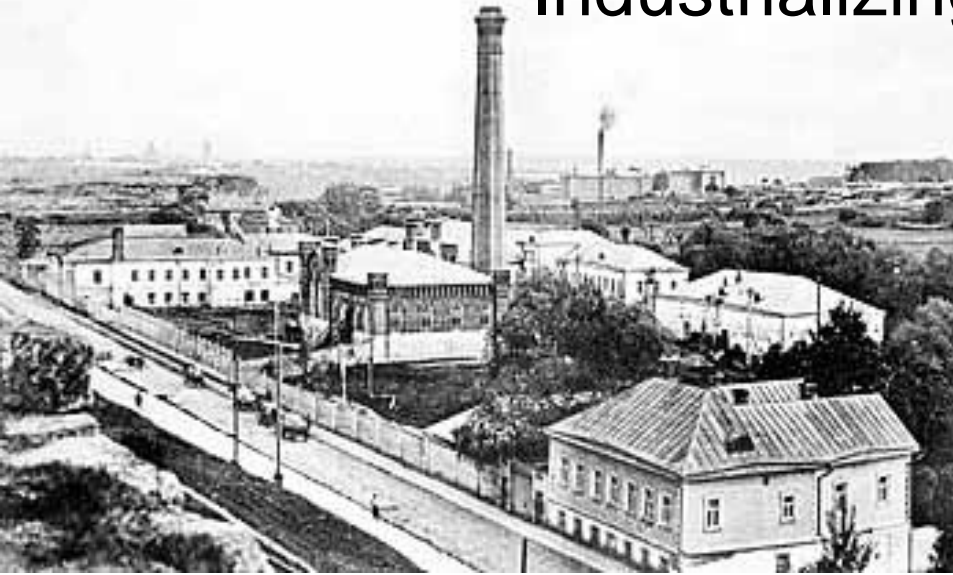
B.R. Mitchell, European Historical Statistics 1750-1970

B. "Asian Pattern" of Industrial Development: high growth rates; low per capita income

By 1913, Russia's per capita national income was 40% less than France and Germany, 80% less than UK, and 90% that of the USA



# Industrializing Russia



Textile Factories, Moscow province, 1910



Siberian Commercial Bank, StP, 1910



Moscow Stock Exchange



Congress of Russian Manufacturers, Moscow, 1911



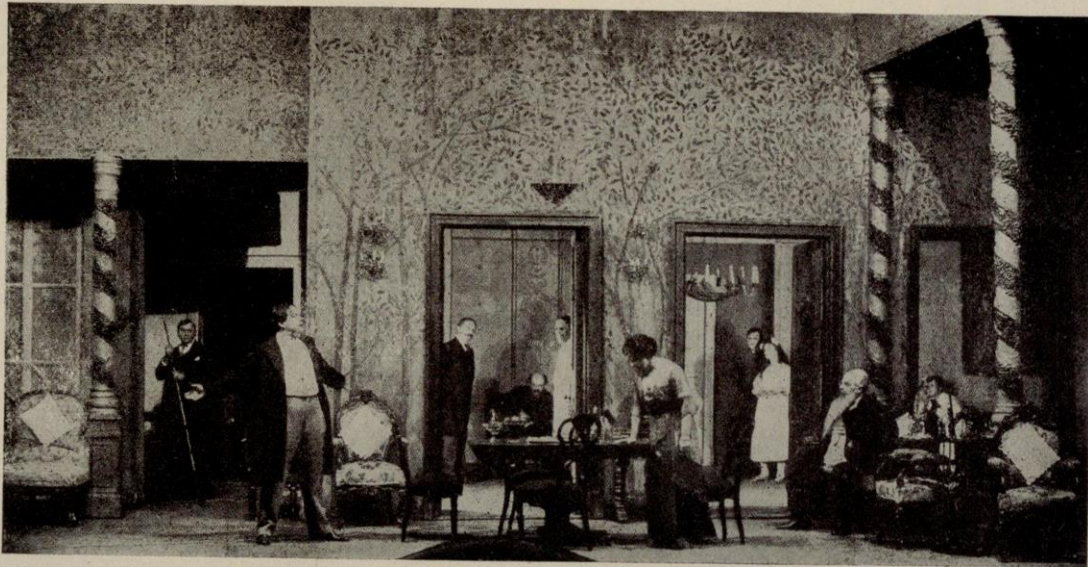
Governing Board, Imperial State Bank, c.1900



# Decline of Noble Landholding Post-1861

% of Noble Land Owned in 1861 and Still owned in

1872	92.6
1882	81.7
1892	72.4
1902	61.0
1913	47.6



From Theatre Arts Magazine

THE CLIMAX OF ACT III IN TCHEHOFF'S "THE CHERRY ORCHARD," AT THE MOSCOW  
ART THEATRE

## Post-Emancipation Peasantry: Impoverishment or Enrichment?

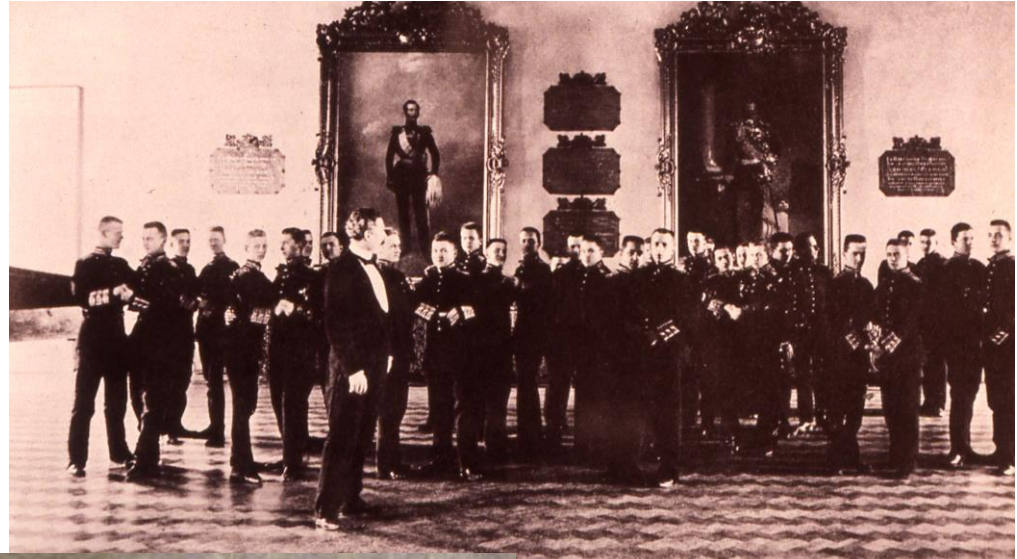


## Estates (*Soslovie*) of the Realm

Potomstvennoe Dvorianstvo	Hereditary Nobility
Lichnoe Dvorianstvo	Personal Nobility
Dukhovenstvo	Clergy
Kupechestvo	Merchantry
Potomstvennyi Pochetnyi Grazhdanin	Hereditary Honorary Citizen
Pochetnyi Grazhdanin	Honorary Citizen
Meshchanstvo	Townsman
Krest' ianstvo	Peasantry
Inorodtsy	Aliens
Inovertsy	Non-Orthodox Believers



## Officials and Bureaucrats



900,000 males

86,000 positions in the central ministerial state

White collar clerks

Pathway to hereditary noble status: ~40,000 in late 19<sup>th</sup> century



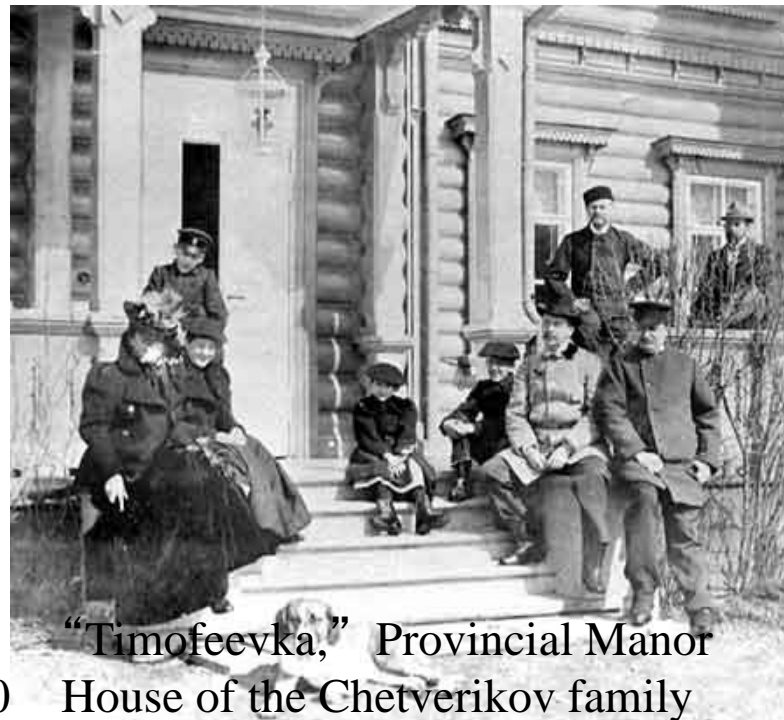
# Aristocracy and Nobility



Marshals of Nobility, Coronation, 1896



Alexander (25) and Olga (19) Kavelin, 190



“Timofeevka,” Provincial Manor House of the Chetverikov family

1.5% of population

40% of arable land

In 1914 the landed nobility owned 1/3 of the land it had owned in 1861



## Middling Classes: “Free Professions”



Vladimir Spasovich,  
Attorney, 1891



Municipal Eye Hospital, Moscow, c. 1900



A. V. Bystritskii, 1911,  
zemstvo physician



D. I. Mendeleev  
(1834-1907),  
Professor of  
Chemistry, St.  
Petersburg University

1.3 million individuals with  
secondary education (1% of  
population)

in 1909 for every 10,000  
subjects, 1 lawyer, 2 doctors,  
4 university students



## Victorian Women and Public Roles



M. I. Kommissarovskaia, opera diva



Bestushev  
Women's  
Courses,  
1880s



Mathilda Feliksovna Kshesinskaia  
(1872-1971), Mariinsky Balet  
Prima Ballerina

# Merchants and Entrepreneurs



Astrakhan commercial entrepreneur  
Kuznetsov and wife, c. 1900



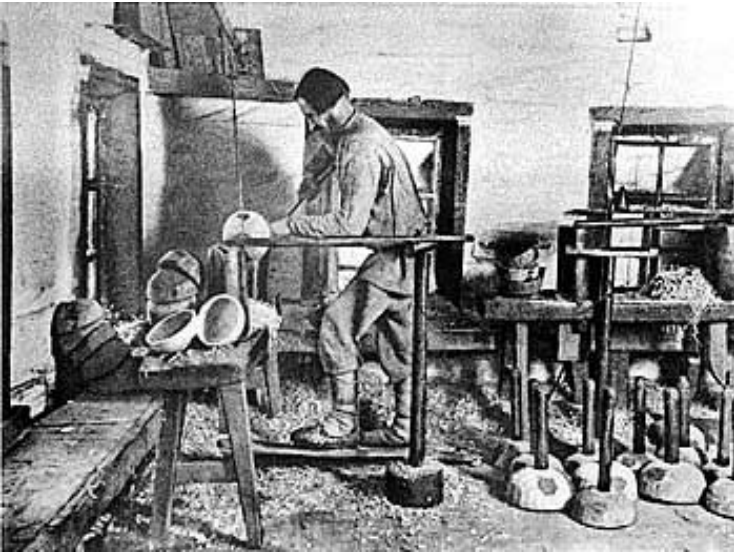
A.I. Konovalov  
(1875-1948),  
Moscow Textile  
Industrialist and  
Politician

I.F. Maliushin (1813-187?) and A. F. Maliushina,  
“Merchant of the First Guild ,” Moscow Tea  
Merchant

250-500,000 individual families  
key commercial-industrial areas (St.  
Petersburg and Moscow regions, Ukraine  
(Kiev, Odessa, Kharkov), Poland (Lodz,  
Warsaw), the Caucasus (Baku), Astrakhan



# Townspeople (Meshchanstvo)



Moscow provincial artisans



13.4 million in 1900; tradespeople, artisans, shopkeepers





# Clergy



# Officers and Soldiers



standing army of 750,000-1 million men

recruits drafted at age 18 (universal conscription with exemptions), served for six years active duty, reserves until age 55





## Industrial Workers



Moscow textile industry



Iuzha, Vladimir Province, company housing for A.Ia Balin Manufacturing Co., 1910



St. Petersburg street carnival



# Peasantry



Loggin Semenovich Snegirev, c.1905  
(voter, First Duma elections)



## Post-Emancipation Peasantry: Impoverishment or Enrichment?

