

“Galilee, oh Galilee...”: Jesus and Followers in the Villages and Towns of Galilee



“You too were with Jesus the
Galilean”

Matt 26:29

Jesus replied, “Let us go somewhere else—to the nearby villages—so I can preach there also. That is why I have come.”³⁹ So he traveled throughout

Galilee, preaching in their synagogues and driving out demons.

Coping/Cooperating or Following Jesus on the Path to the Founding of a Different Kingdom

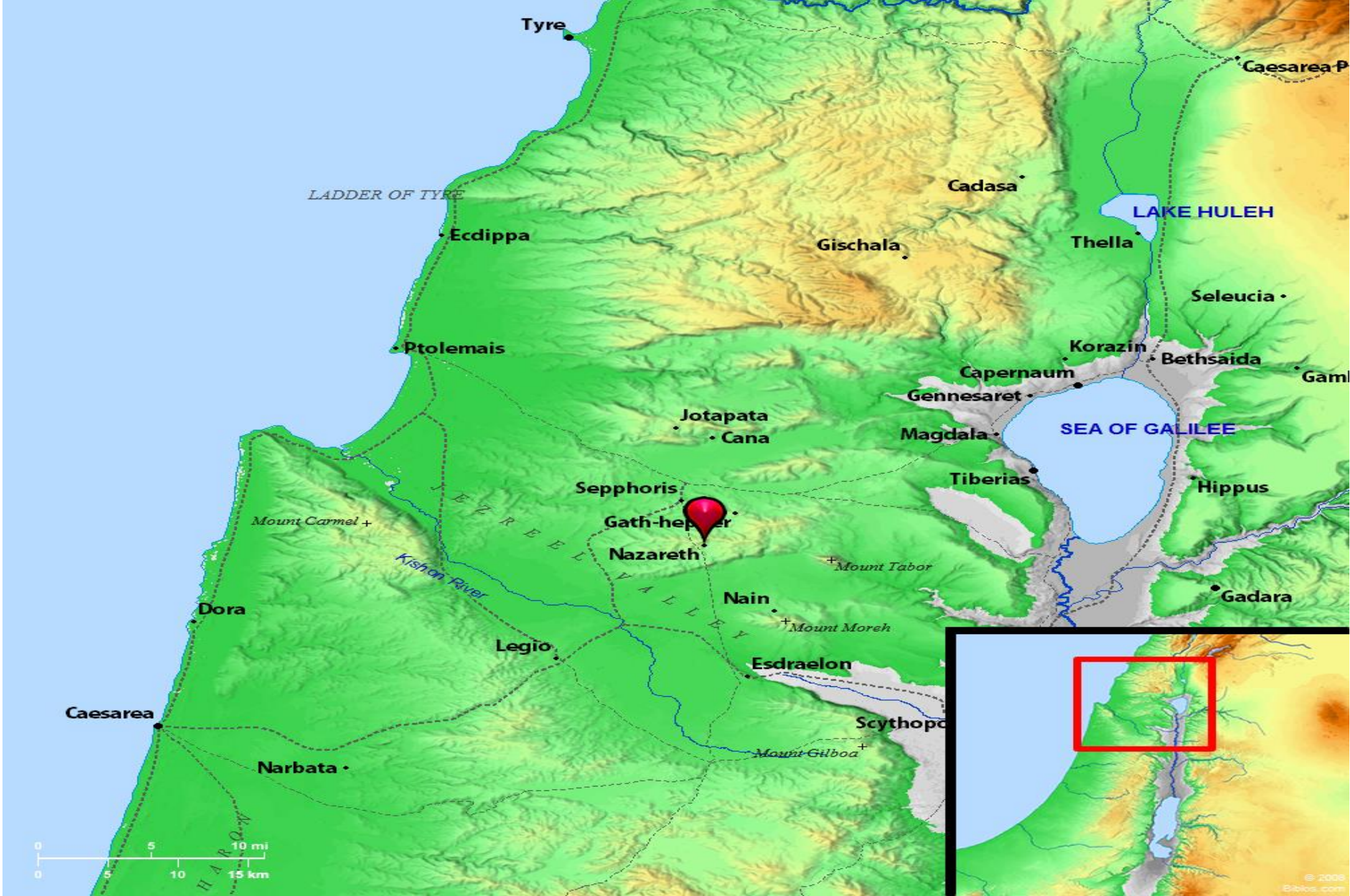
There are Those Who are Pursuing a Variety of Coping Strategies with the New Reality:

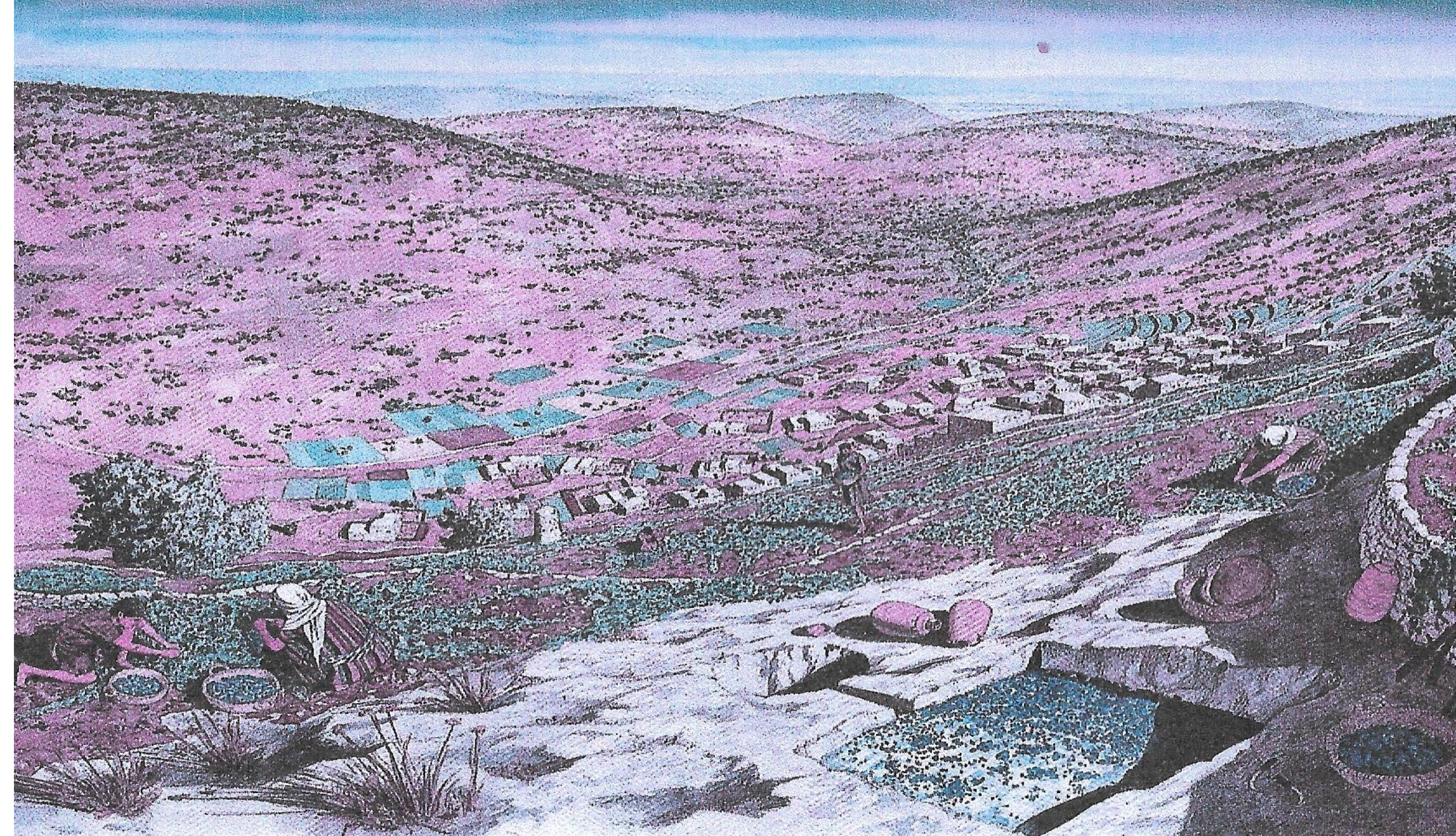
- Transfer of Lands to the Elite and enter into Leasing and Thereby Becoming:
- Tenants
- Slaves
- Bandits
- Accepting the Status Quo and Trying to Avoid its most Baneful Effects

Jesus and his Followers offered the Alternative to Coping – The Assurance of the Advent of God's Reign which would mean the Reversal of all the Dominant Values that Were Currently Destroying Their Lives at Every Level. A Call to Envision the World Differently And Act on That Vision.

- A Jewish Vision Derived From the Sacred Text:

God is Lord, All are God's Children, Resources God Provided are to Be Shared So that All May Live the Life Abundant – A Kingdom of God as Conceived by the Scribes and Propagated by the Prophets (to include Jesus)

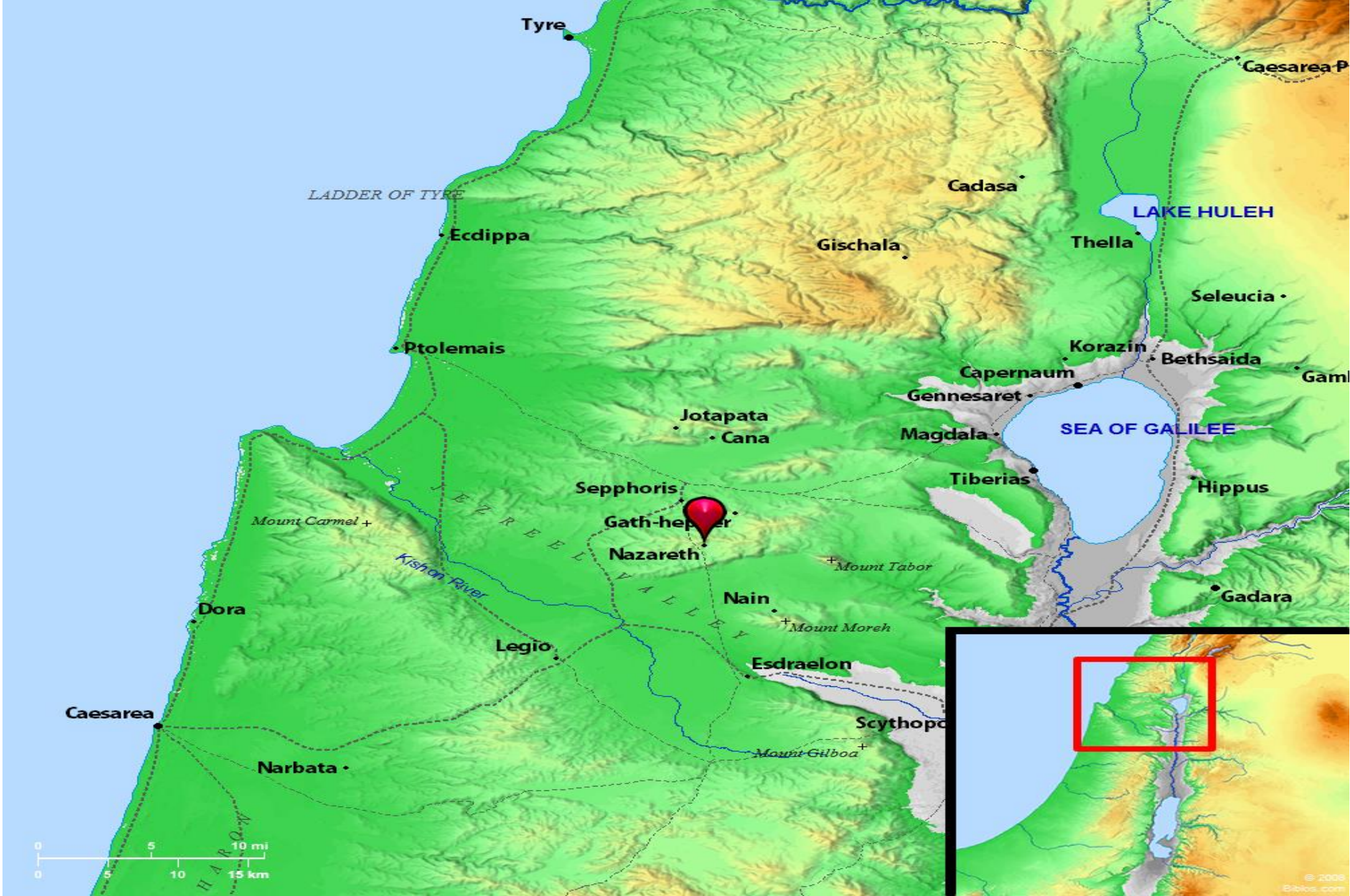








Recreation
of 1st
Century
House in
Nazareth



MEDITERRANEAN SEA

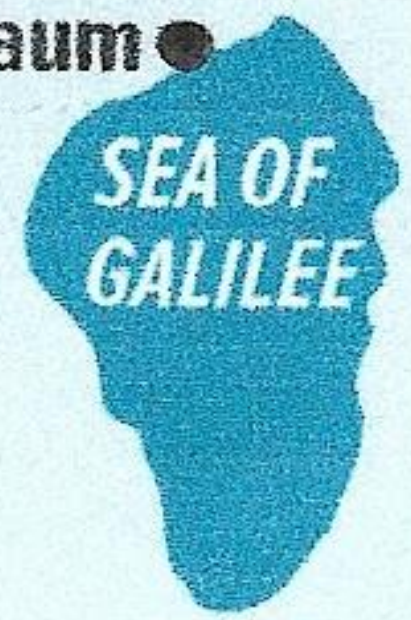


15 mi

Chorazin



Capernaum



SEA OF GALILEE

Sepphoris



Nahal Zippori



Nazareth





Tyre

Caesarea Philippi

Lebanon

Syria

Mediterranean Sea

Jordan River

Golan Heights

Ptolemais

Capernaum

Cana

Tiberias

Sea of Galilee

Nazareth

Mt. Tabor

Mt. Carmel

Jezreel Valley

Mt. Moreh

Capercotnei

Caesarea

Scythopolis

Jordan River

Jordan



© David W. Leighton



completed
June 27, 2013
147hrs
Mario Rangel

Sea of Galilee Boat
Circa 1st AD





© David W. Leighton



completed
June 27, 2013
147hrs
Mario Rangel

Sea of Galilee Boat
Circa 1st AD

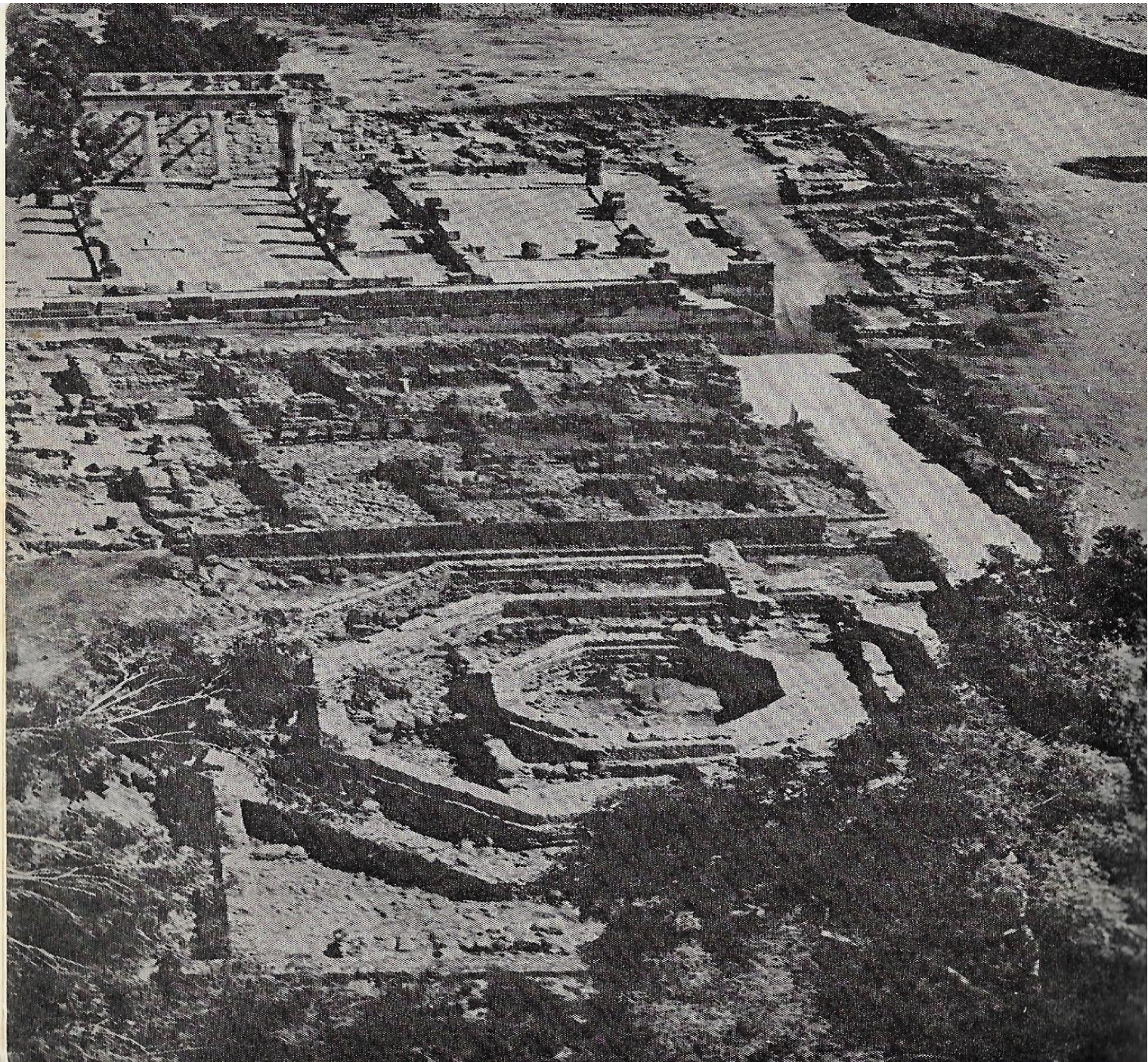
An aerial photograph of a coastal fortification. The fort is built on a hillside overlooking the sea. It consists of several interconnected sections. A prominent feature is a large, octagonal structure with multiple concentric walls, located in the lower right quadrant. To its left and slightly higher up is a large, rectangular complex with a grid-like internal layout. A long, narrow wall extends from the octagonal structure towards the left, crossing a road. In the background, the sea is visible, and there are some buildings and trees on the surrounding land. Two yellow text boxes are overlaid on the image: one in the upper left quadrant and one in the lower right quadrant.

Greek Orthodox

Franciscan



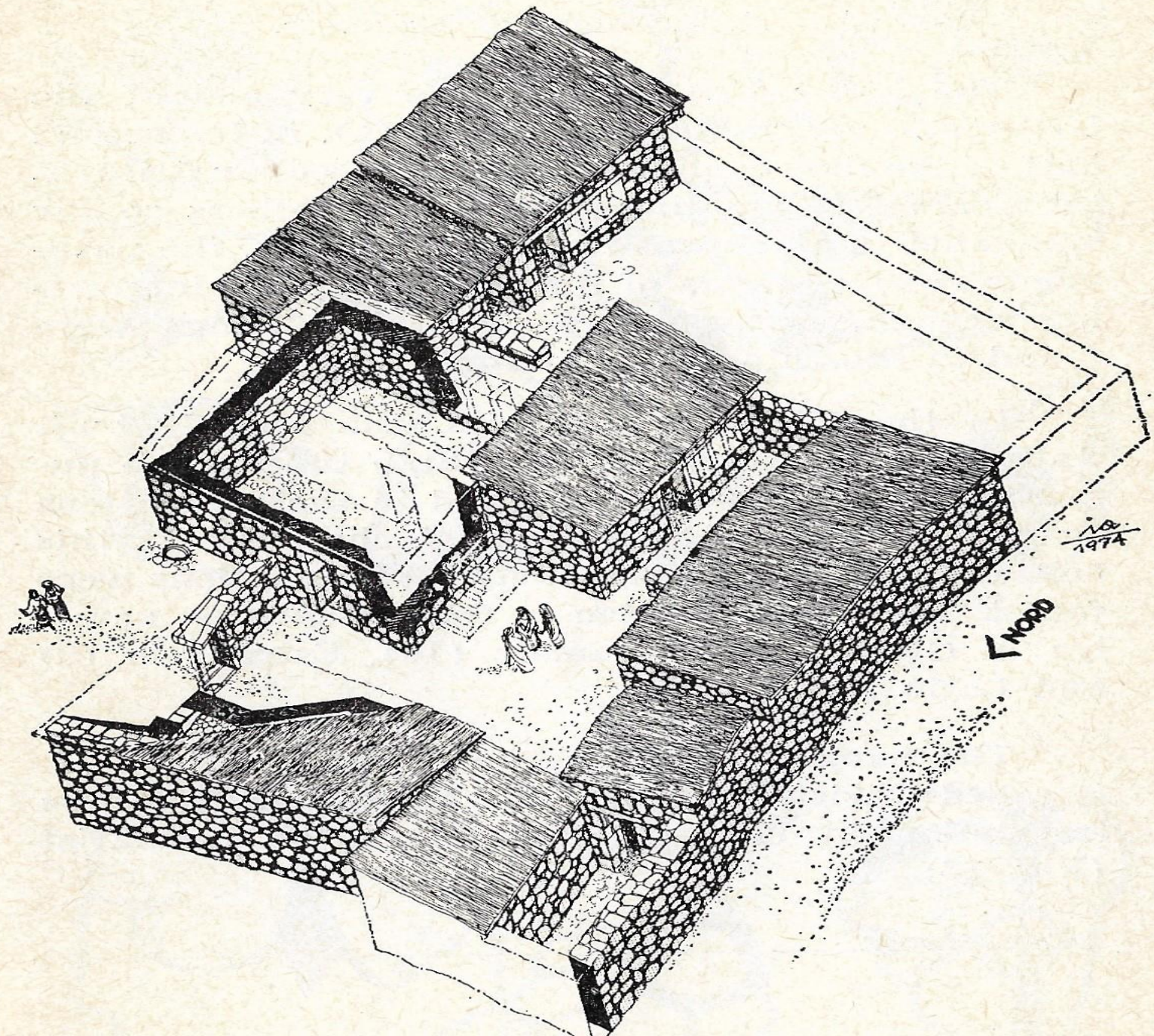




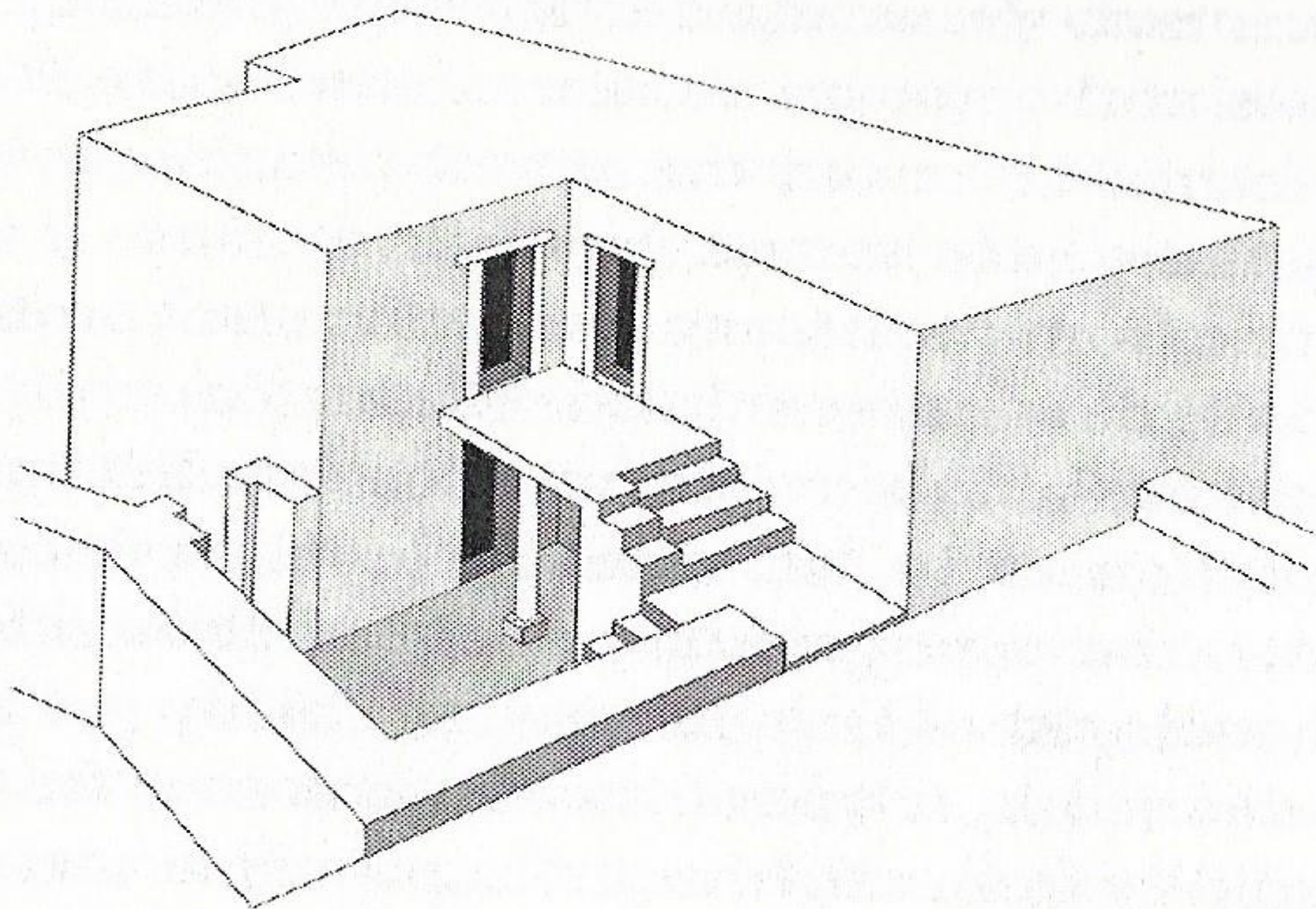















“And Jesus said to them, ‘Follow me and I will make you fish for people.’ Immediately they left their nets and followed him.”

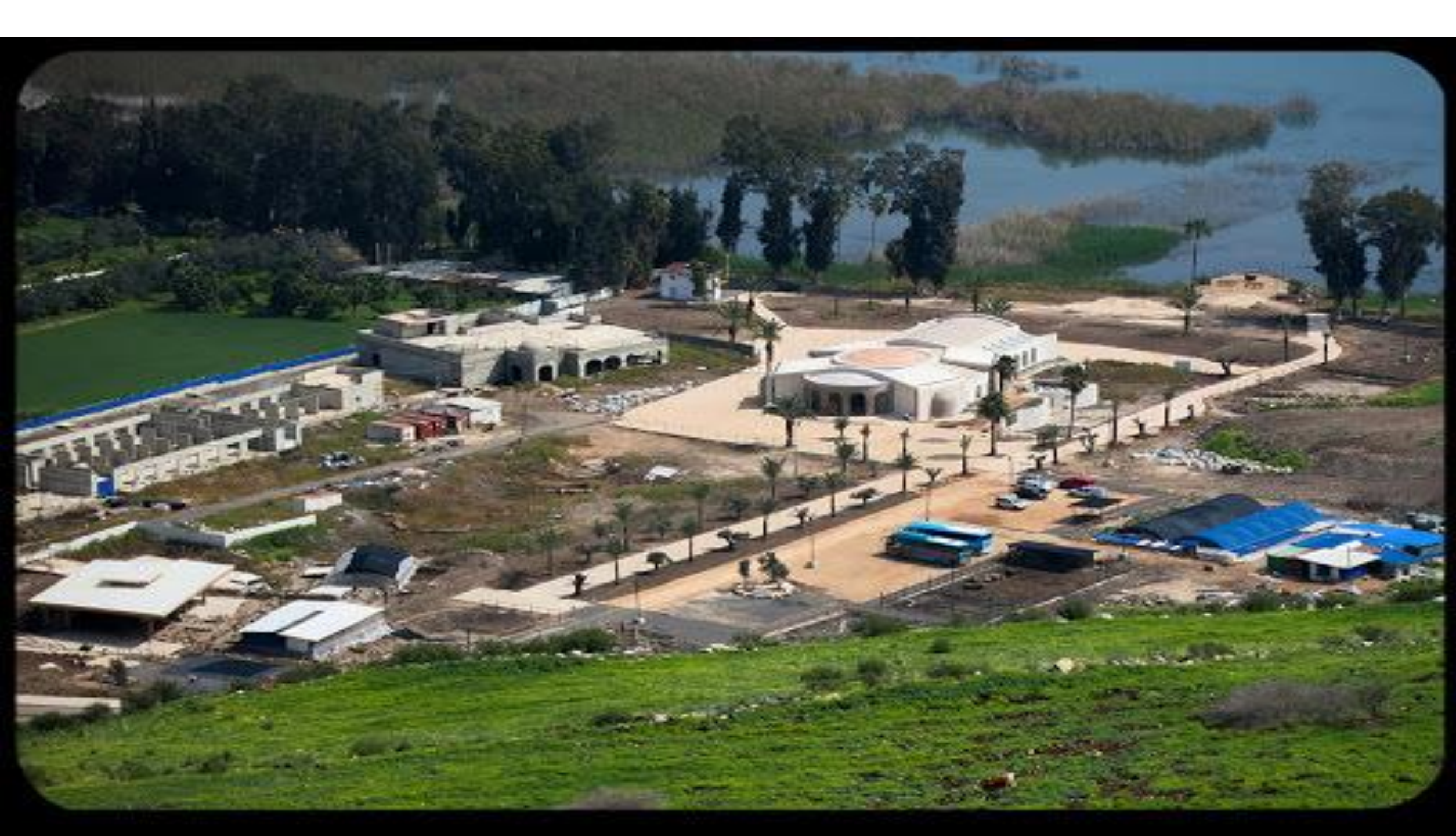
Matt 1:29-20



3rd/4th Century Synagogue Wall

**1st Century Black Basalt
Foundation**















ΕΠΙΤΑΦΙΟΝ
ΑΝΤΩΝΙΟΥ







Welcome to Galilee and Cana

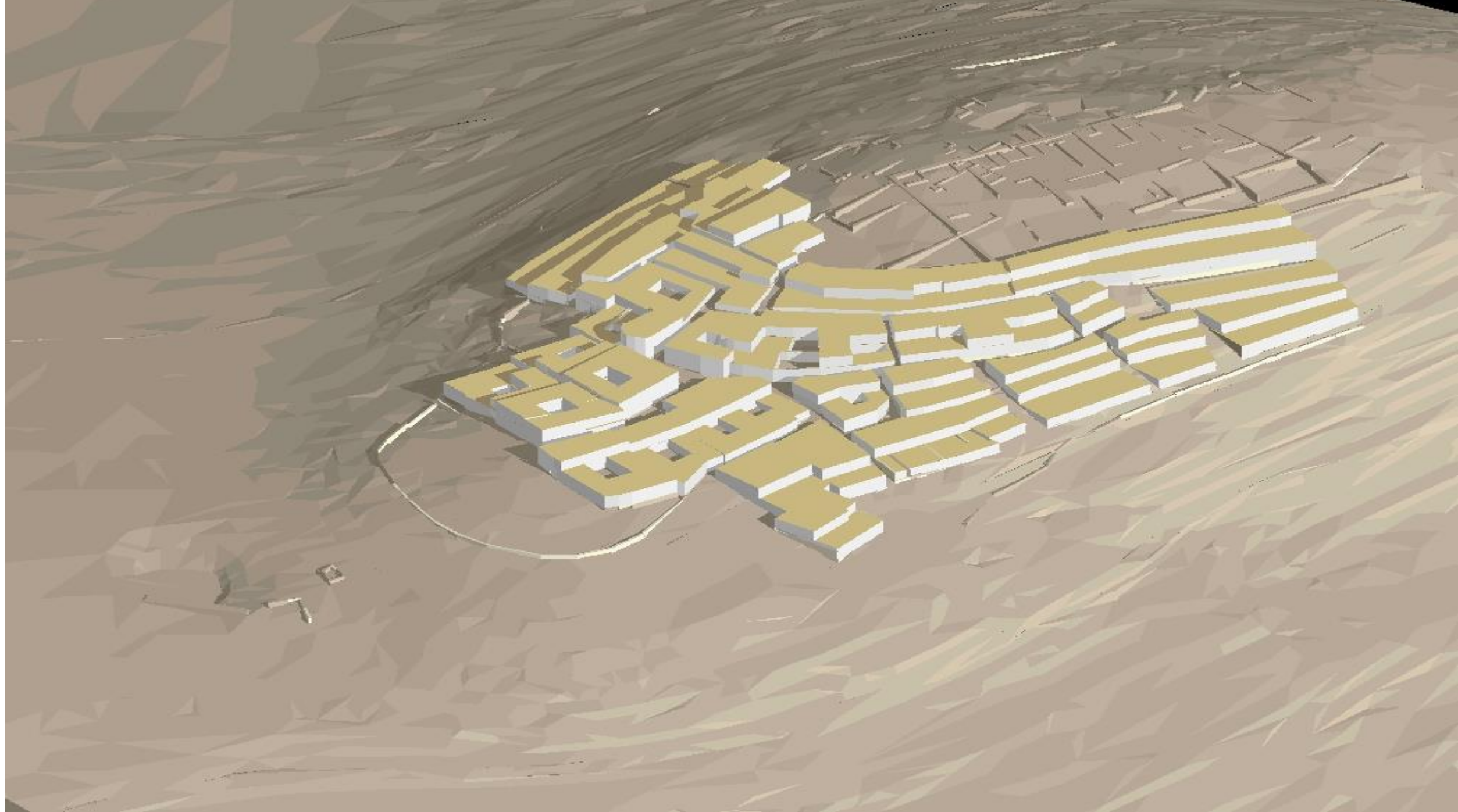


Khirbet Qana/ Cana of Galilee

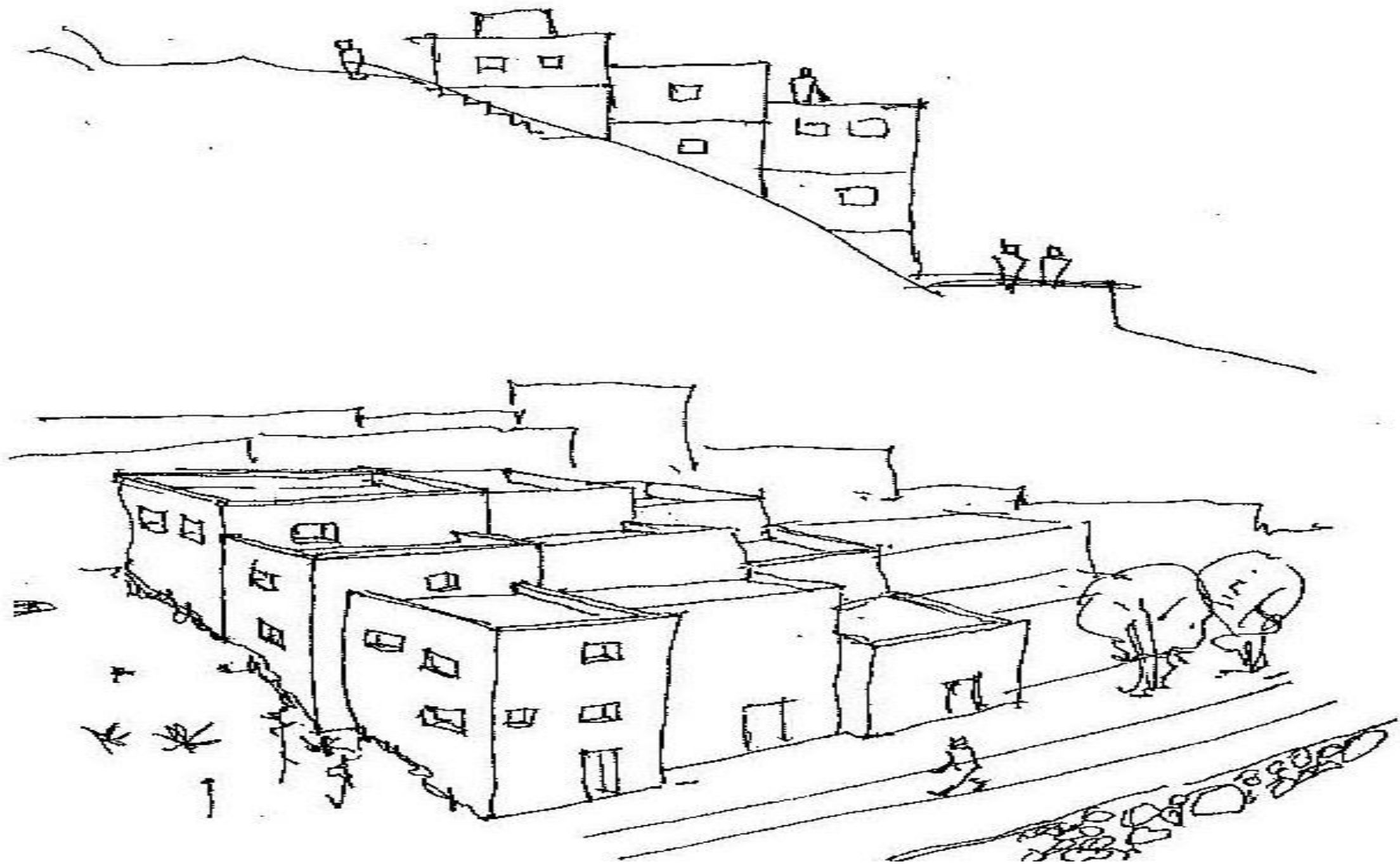


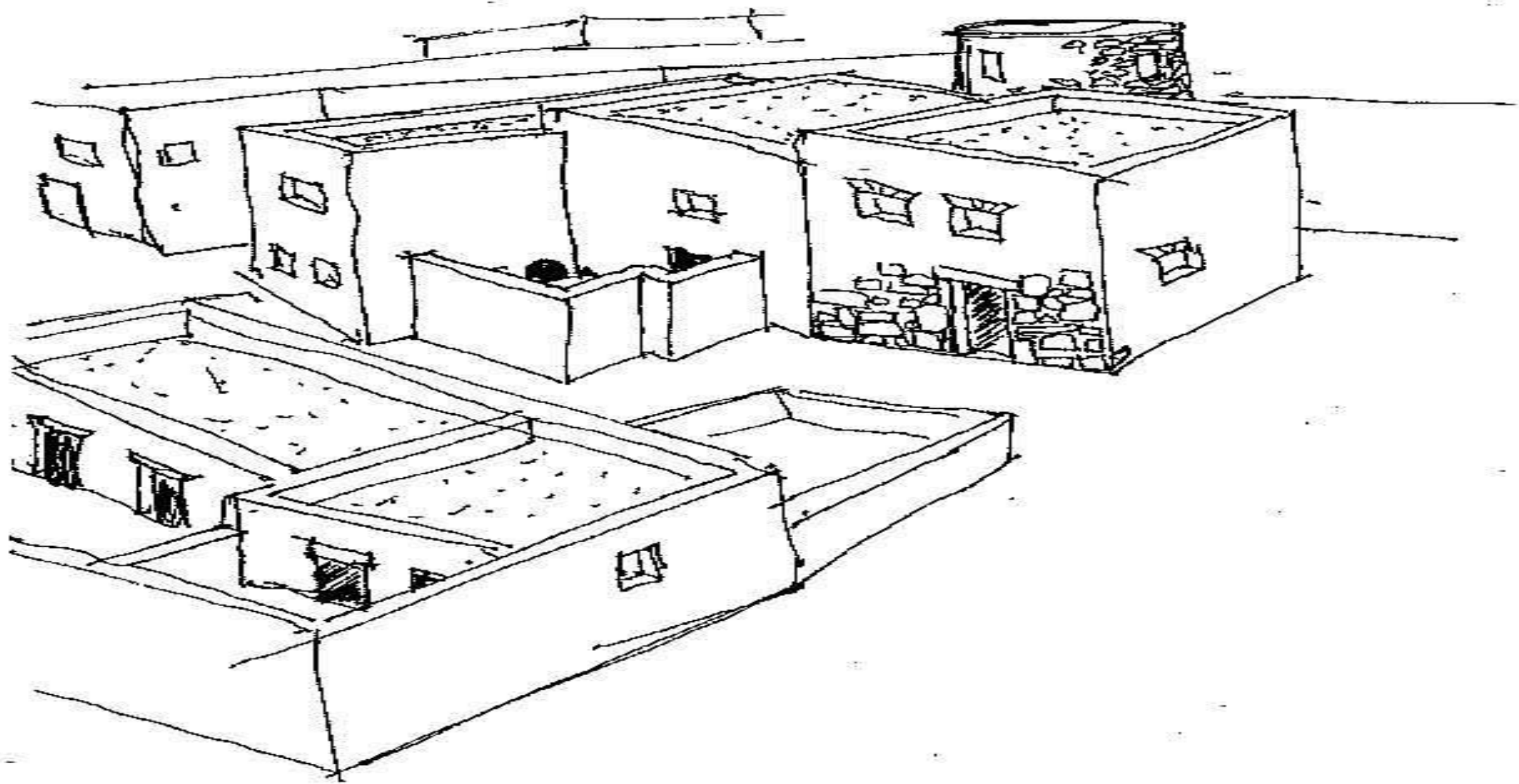
















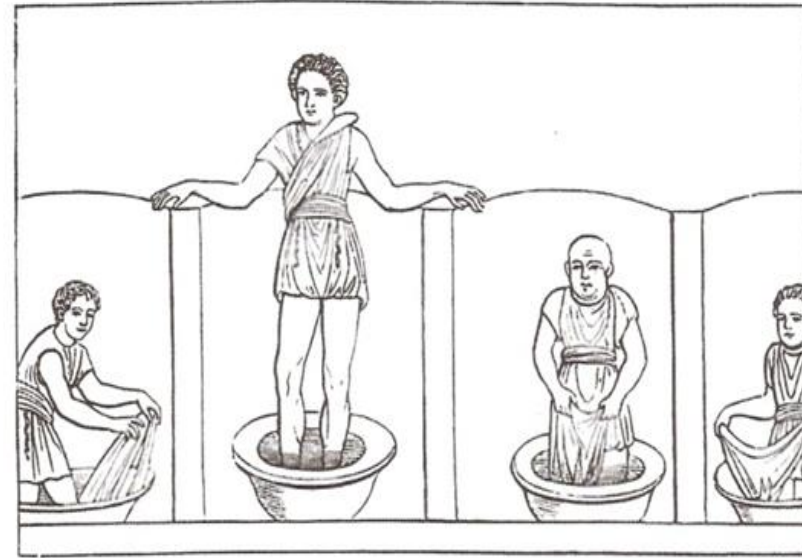
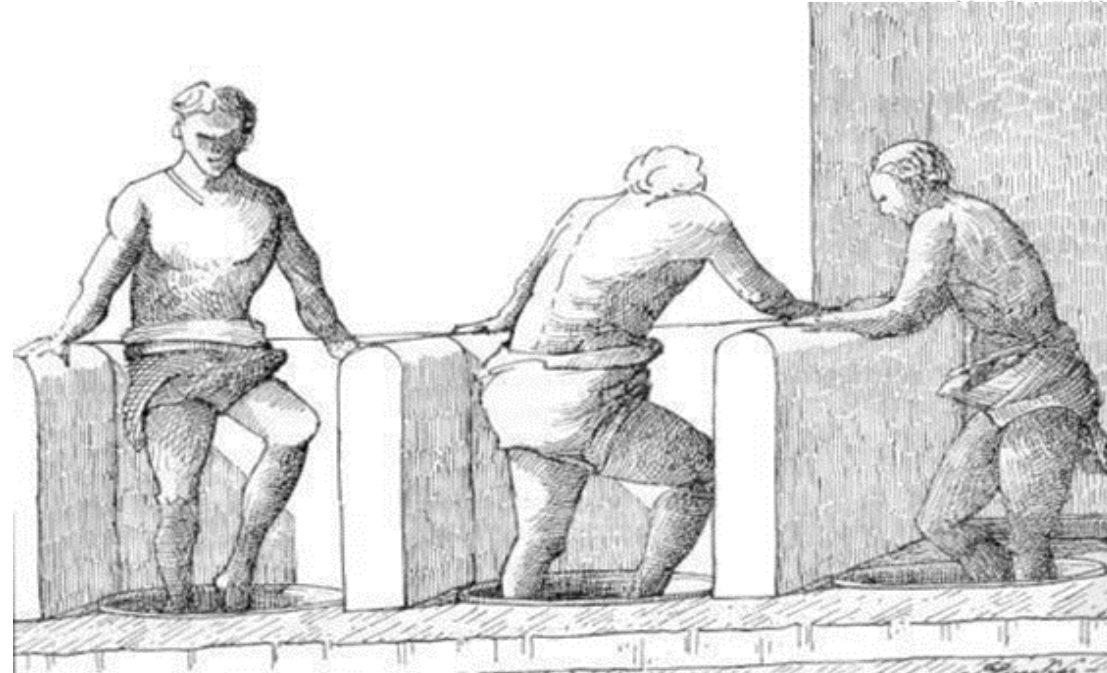
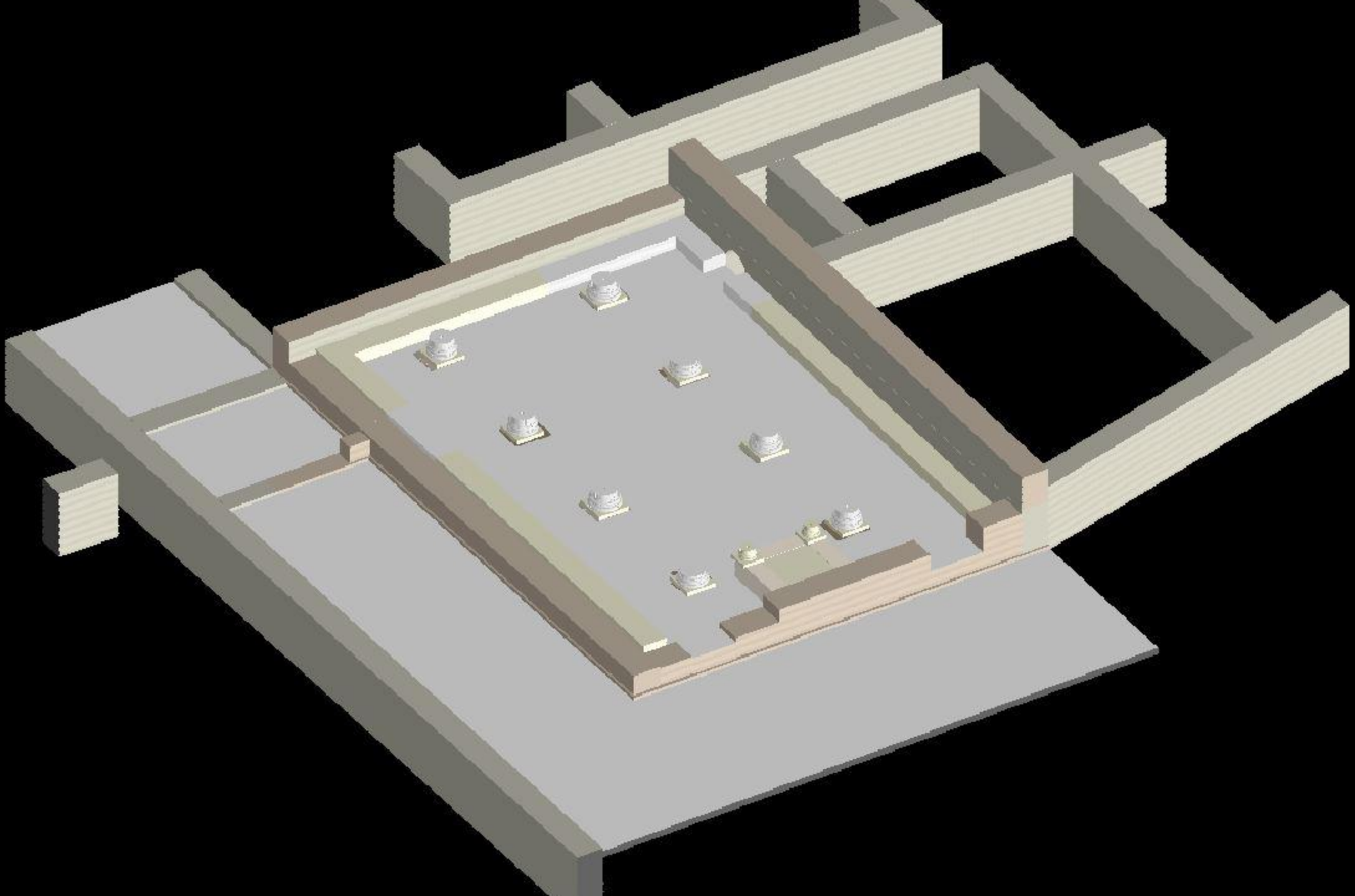
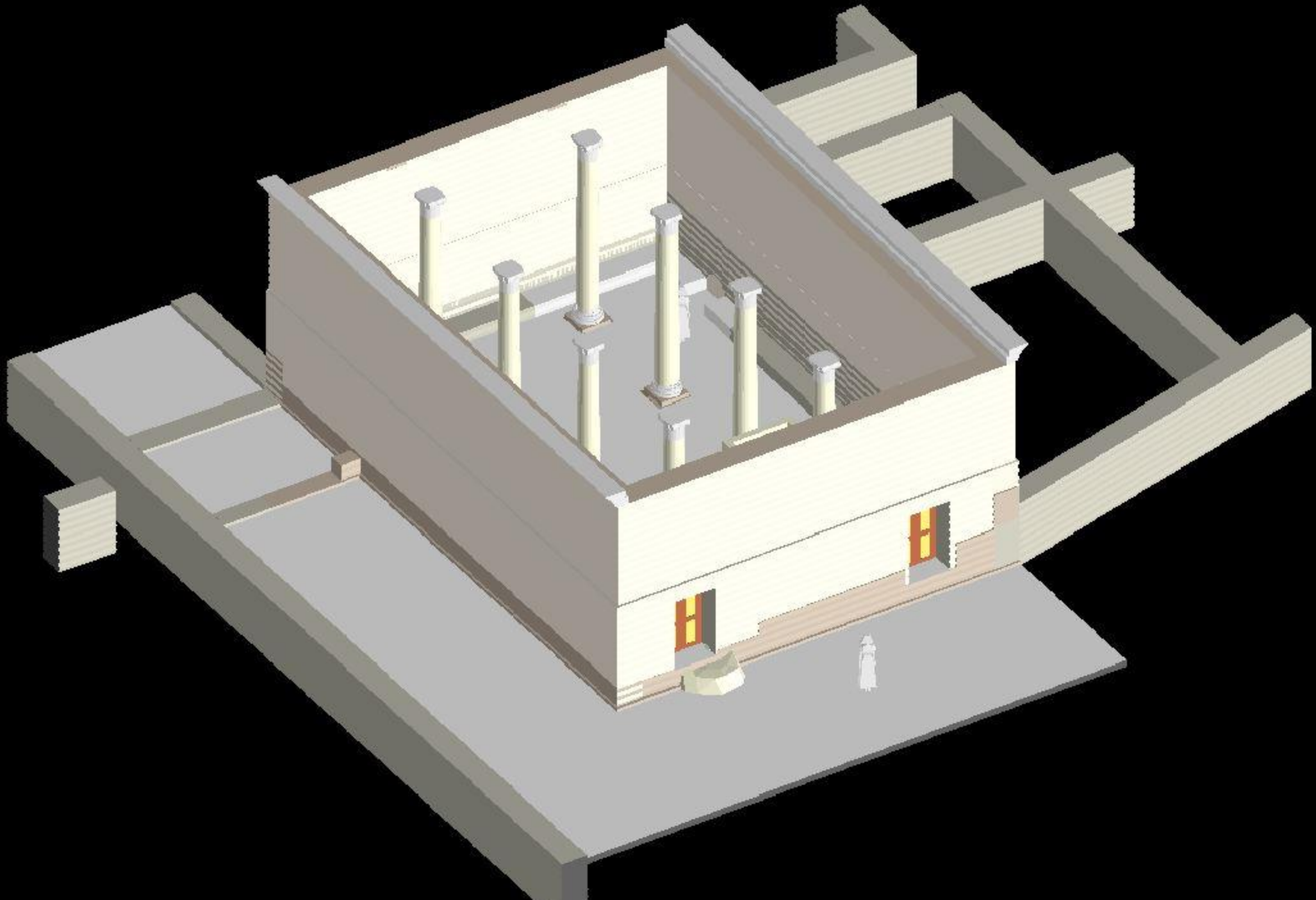


Figure 29.4b Wall painting from *Fallonia* (VI.8.2, 20–21): treading the fabric; 242.











CM

